

250 SOUTH OAK WAY ACCOMMODATION



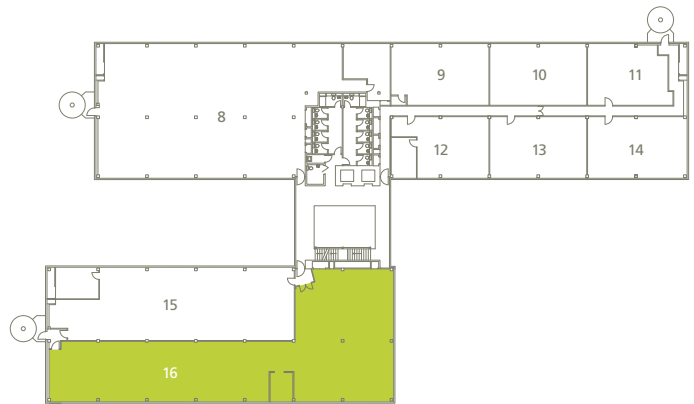
Second Floor

Suite	sq ft	sq m	Parking	Tenant
Suite 17	5,049	469	16	Archimedes Pharma
Suite 18	983	91	3	Archimedes Pharma
Suite 19	973	90	3	Archimedes Pharma
Suite 20	794	74	2	Archimedes Pharma
Suite 21	981	91	3	To Let
Suite 22	972	90	3	To Let
Suite 23	995	93	3	Archimedes Pharma
Suite 24	2,830	263	9	Sia
Suite 25	4,489	417	14	DeCon



First Floor

Suite	sq ft	sq m	Parking	Tenant
Suite 8	5,049	469	16	APC
Suite 9	983	91	3	Miller
Suite 10	973	90	3	Archimedes Pharma
Suite 11	794	74	2	Archimedes Pharma
Suite 12	981	91	3	ITERGY
Suite 13	972	90	3	H. Foster
Suite 14	995	93	3	Kaplan IT
Suite 15	2,830	263	9	Facilitas
Suite 16	4,489	417	14	To Let

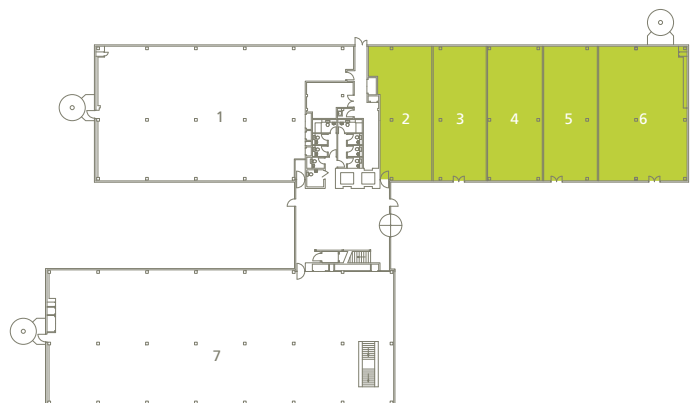


Ground Floor

Suite	sq ft	sq m	Parking	Tenant
Suite 1	5,049	469	16	APC
Suite 2-6	Retail units*		3	To Let
Suite 7	4,760	442	3	Sia

Approximate net internal areas

*Retail availability from 1,044 sq ft (97 sq m) to 6,618 sq ft (615 sq m)



Duncan Campbell
E duncan@campbellgordon.co.uk

Christopher Barrs
E chris@campbellgordon.co.uk



Emma Goodford
E emma.goodford@knightfrank.com

Ryan Dean
E ryan.dean@knightfrank.com

PRUPIM

WWW.GREENPARK.CO.UK



HIGH SPECIFICATION BUSINESS SPACE

Suites within 250 South Oak Way are fitted out to a high grade A standard. The specification is designed to meet the needs of modern businesses and provides:

- VRV Air conditioning
- Full access raised floors (150 mm void)
- Floor boxes
- Suspended ceiling
- Integrated Category 2 or LG3 compliant lighting systems
- Excellent car parking ratio of approximately 1:320 sq ft
- Double glazing
- Male and female WCs on each floor
- Shower facilities
- Bicycle racks
- Two x 1,000 kg capacity passenger lifts

